

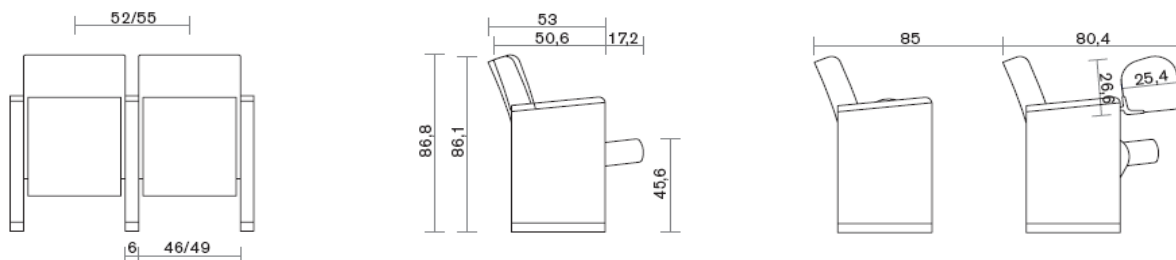
## Typology: **conference**

Versatile, coloured and suitable in any circumstances.

Sitting in battery for conference and congress hall, Quadra states its versatility, which is expressed in the wide range of customising, measures and finishes. Very easy assembling, upholstery with sound absorption materials which satisfy the ambience's acoustic specifications. The seat's noiseless movement is provided with rubber dumpers.



## Dimensions



## Available finishes

**Upholstery:** Fabric, Ecoleather, Leather

## Technical characteristics

### Seat and Backrest

**SEAT:** structural, in 15 mm thick multilayer beech wood with steel pivots for the seat's rotation and side support installation.

**BACKREST:** structural, in curved multilayer beech wood with thickness 13 mm with metal sheet angles for side support installation.

### Padding:

Seat and backrest are padded in flexible polyurethane foam.

**SEAT:** self-extinguishing padding in polyurethane foam with density 40 Kg/m<sup>3</sup>.

**BACKREST:** self-extinguishing padding in polyurethane foam with density 30 Kg/m<sup>3</sup>.

### Sides:

Inner structure in steel pipe to be fixed to the floor. The metal structure is covered with wooden boxes to be padded with polyurethane foam with density 50 kg/m<sup>3</sup> where the rotation mechanisms and the fixing devices to fix the backrested are mounted.

### Armrests:

In multilayer wood, thickness 30 mm. Padding in self-extinguishing polyurethane foam with thickness 10 mm and density 50 Kg/m<sup>3</sup>. Upholstery in high quality bovine leather or fire-resistant fabric. On demand it is possible to have the armrests in sycamore veneer. The armrests are easily replaceable.

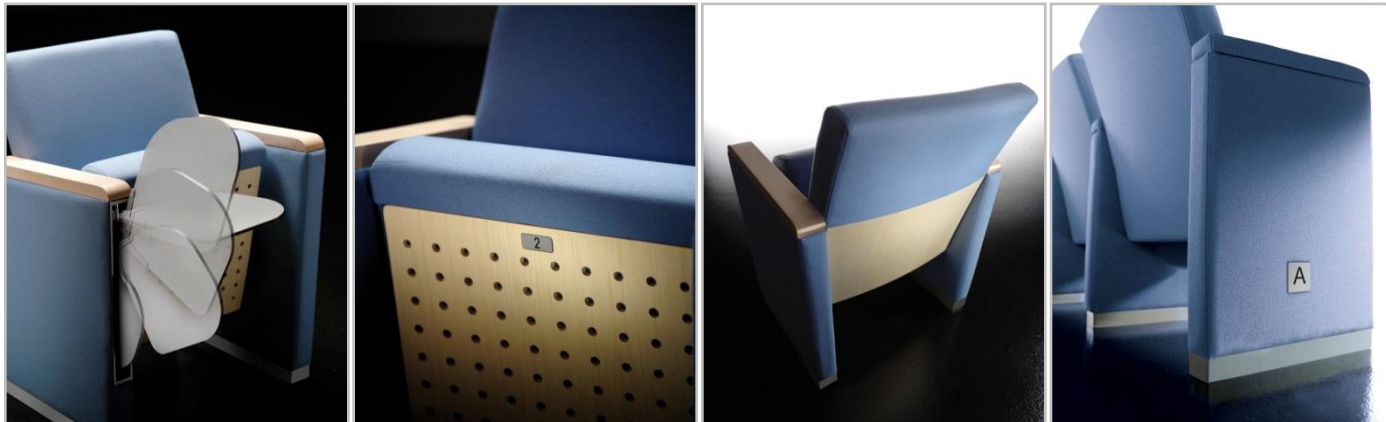


### Mechanisms

Seat with tip-up mechanism of noiseless counterweight type.

### Accessories

Right and left hand writing tablet;  
Under seat panel in multilayer wood veneered in sycamore finish with holes to increase the sound absorption of the chair;  
Rear back panel in laminated wood veneered in sycamore finish;  
Upperarm in sycamore solid wood of thickness 30 mm;  
Arrangement for curved rows and sloped floor;  
Seat and row numbers;  
Aisle light.



### Certificates

The chair has passed the most rigorous tests and provides extensive guarantees on the quality of the used materials.